

SAW PIPES

EEW GROUP



THE EEW GROUP PROFESSIONAL CAPACITY FOR PROFESSIONALS!



LNG - Receiving Terminal



Stainless steel piping



Offshore construction



Process plant construction



Power plant construction



Machinery construction



EEW Pipes on top of the Burj Dubai Tower

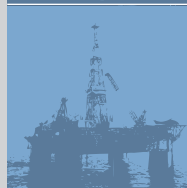
**CARBON STEEL
PIPES**

**STAINLESS STEEL
PIPES**

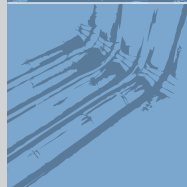
**CLAD STEEL
PIPES**



OIL / GAS / POWER PLANT CONSTRUCTIONS



**OFFSHORE OIL AND GAS CONSTRUCTIONS
OFFSHORE WIND CONSTRUCTIONS
HARBOUR / JETTY CONSTRUCTIONS**



PIPELINES AND ACCESSORIES



**MACHINERY AND
PRESSURE VESSEL CONSTRUCTION**

ALL-ROUND SERVICES FOR CLIENTS: EEW GROUP

The EEW group is an association of SAW pipe mills and trading/representation companies.

The traditional EEW strength is the production of SAW steel pipes. Within the EEW group a worldwide unique combination of dimensions **(from 406 mm (16") to 7.000 mm (275") outside diameter with wall thickness up to 130 mm (5") and length/weight up to 120 m (400')/1.000 tons)** and material grades **(from standard carbon steel, stainless steel up to high alloy and clad pipes)** can be manufactured.

The yearly capacity of all pipe mills in the group exceeds 400.000 tons, which is based on optimal production machines and sequences, combined with more than 70 years experience in manufacturing of steel products.

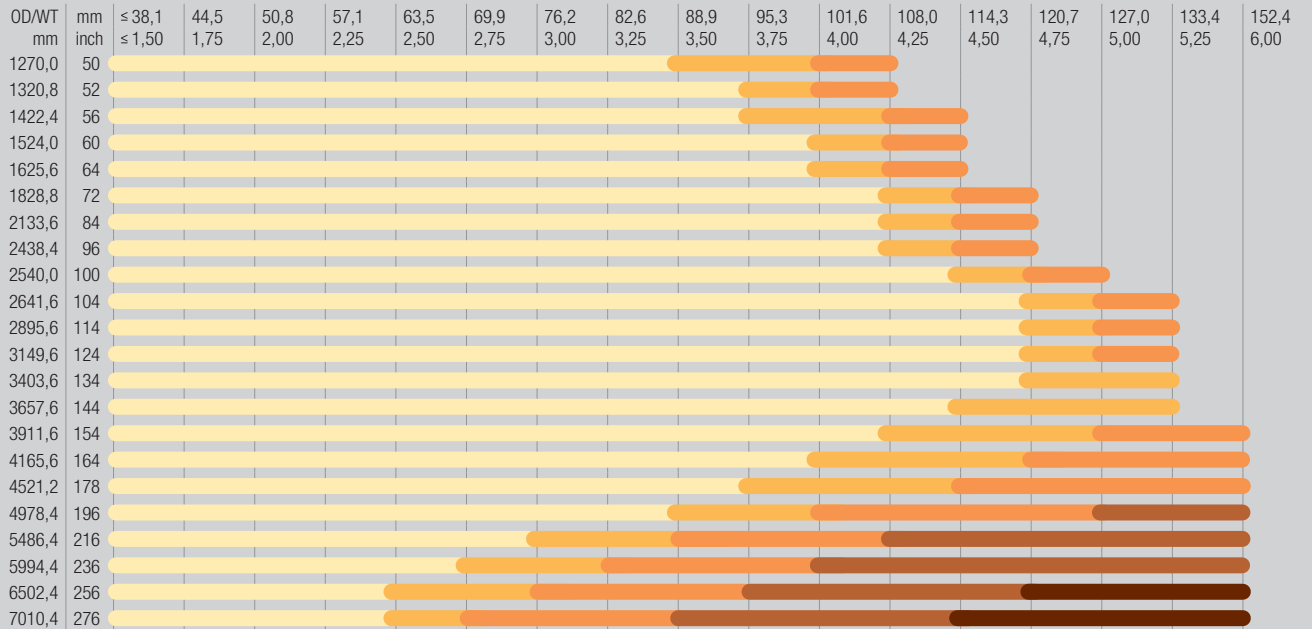
Our trading/representation companies are located close to the clients and are able to offer a wide range of products around SAW pipes. The EEW group offers a full professional service "out of one hand" you can count on – worldwide.

WE WILL SUPPLY PIPES ACCORDING TO YOUR REQUIREMENTS!

TECHNICAL INFORMATION

4,2-4,8 METRE – 4 ROLL BENDING

PIPE FABRICATION PROGRAMME, BASED ON NOMINAL YS OF 360 MPA / 52 KSI

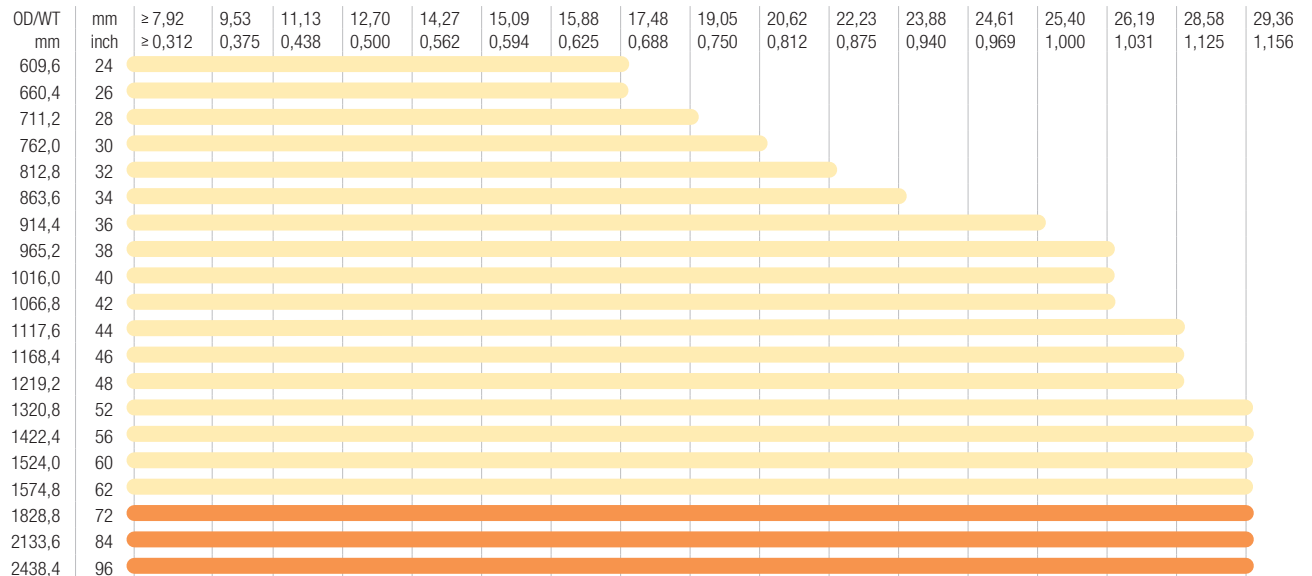


- PIPE LENGTH UP TO 4200/4800 MM / 13,75 - 15,75 FT.
- PIPE LENGTH UP TO 3000 MM / 10 FT.
- PIPE LENGTH UP TO 2500 MM / 8 FT.
- PIPE LENGTH UP TO 2000 MM / 6,5 FT.
- PIPE LENGTH UP TO 1500 MM / 5 FT.

The chart is based on cold forming.
The chart is based on max. 30 tons plate weight.
Production of intermediate O.D. and wall thickness is possible

12,2 METRE – 3 ROLL BENDING

PIPE FABRICATION PROGRAMME, BASED ON NOMINAL YS OF 360 MPA / 52 KSI



- PIPE LENGTH 12200 MM
 - PIPE LENGTH 12200 MM WITH 2 LONG. WELDS
- Production of intermediate O.D. and wall thickness is possible.

12,5-13,2 METRE – PRESS BENDING

PIPE FABRICATION PROGRAMME, BASED ON NOMINAL YS OF 360 MPA / 52 KSI

OD/WT	mm	≤ 12,7	15,9	19,1	22,2	25,4	31,8	34,9	38,1	40,5	44,5	47,6	50,8	54,0	57,1	59,5	63,5	66,7	69,9	73,0	76,2	82,6
	inch	≤ 0,50	0,625	0,75	0,875	1,00	1,25	1,375	1,50	1,595	1,75	1,875	2,00	2,125	2,25	2,345	2,50	2,625	2,75	2,875	3,00	32,5
406,4	16	[Yellow bar]																				
508,0	20	[Yellow bar]																				
609,6	24	[Yellow bar]																				
711,2	28	[Yellow bar]																				
812,8	32	[Yellow bar]																				
914,4	36	[Yellow bar]																				
1016,0	40	[Yellow bar]																				
1117,6	44	[Yellow bar]																				
1219,2	48	[Yellow bar]																				
1320,8	52	[Yellow bar]																				
1422,4	56	[Yellow bar]																				
1524,0	60	[Yellow bar]																				
1828,8	72	[Orange bar]																				
2133,6	84	[Orange bar]																				
2438,4	96	[Orange bar]																				

■ PIPE LENGTH 12500 - 13200 MM ■ PIPE LENGTH UP TO 13200 MM WITH 2 LONG. WELDS Production of intermediate O.D. and wall thickness is possible.

12,2-13,2 METRE – STAINLESS/DUPLEX/SUPERDUPLEX STEEL AND HIGH ALLOY

PIPE FABRICATION PROGRAMME

OD/WT	mm	≥ 7,92	9,53	12,70	15,09	17,48	19,05	20,62	22,23	25,40	28,58	31,75	38,10	41,28	44,45	47,63	50,80	57,15	63,50	
	inch	≥ 0,312	0,375	0,500	0,594	0,688	0,750	0,812	0,875	1,000	1,125	1,250	1,500	1,625	1,750	1,875	2,000	2,250	2,500	
406,4	16	[Yellow bar]																		
457,2	18	[Yellow bar]																		
508,0	20	[Yellow bar]																		
558,8	22	[Yellow bar]																		
609,6	24	[Yellow bar]																		
660,4	26	[Yellow bar]																		
711,2	28	[Yellow bar]																		
762,0	30	[Yellow bar]																		
812,8	32	[Yellow bar]																		
863,6	34	[Yellow bar]																		
914,4	36	[Yellow bar]																		
965,2	38	[Yellow bar]																		
1016,0	40	[Yellow bar]																		
1066,8	42	[Orange bar]																		
1117,6	44	[Orange bar]																		
1168,4	46	[Orange bar]																		
1219,2	48	[Orange bar]																		
1320,8	52	[Orange bar]																		
1422,4	56	[Orange bar]																		
1524,0	60	[Orange bar]																		
1828,8	72	[Orange bar]																		
2133,6	84	[Orange bar]																		
2438,4	96	[Orange bar]																		

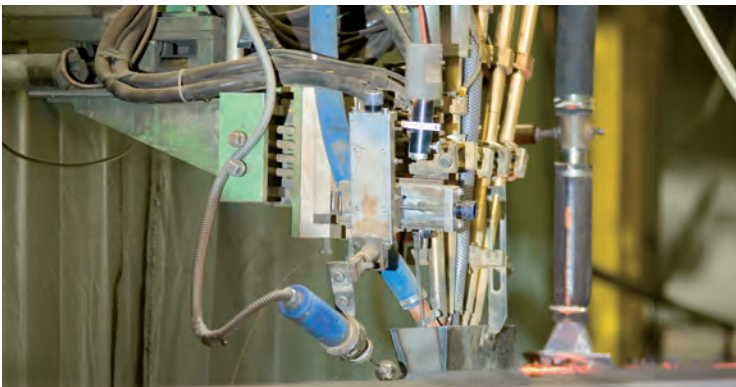
■ PIPE LENGTH 12200 - 13200 MM ■ PIPE LENGTH 12200 MM WITH 2 OR MORE LONG. WELDS Production of intermediate O.D. and wall thickness is possible. Production with 2 long. welds at smaller diameters is possible, also. * Production on special request.

EEW QUALITY RENDERS SUCCESS AND SATISFIED CLIENTS

The most modern equipments also require an integrated quality management system. In 1992, EEW was one of the first companies in Germany to obtain the LRS certification in accordance with ISO 9001 for its products. EEW makes no compromise where material, workmanship and quality control is concerned. Our quality is guaranteed by observing exactly manufacturing and quality control procedures as well as the rules of our quality management system.

EEW is entitled to use the API 5L, 5LC, 5LD and 2B monograms. Numerous national and international certifications prove the high level of quality. Challenge us and you will be convinced of our quality.





THE 12 METRE PRODUCTION LINE

The 12 m production line, based on roll bending, completes the EEW programme. This line is specially designed for high efficient stainless steel pipe manufacturing.

SAW TECHNIQUE

Submerged Arc Welding (SAW) is our standard welding procedure. Based on more than 30 years experience a welding technique up to 5 wires has been developed at EEW.

EEW IN GERMANY ALWAYS ONE LENGTH AHEAD

THE SECRET OF THE PIPE PRODUCTION

Pipes made of the best steels which can be molten nowadays will be produced in the EEW fabrication lines. From the arrival of the plates to the shipment of the EEW pipes everything moves on solid tracks.

We are setting standards in the production of large pipes with our experienced staff as well as the most modern production lines for SAW pipes in the wall thickness range from 8 to 75 mm.



Curved SAW pipe for bridge construction

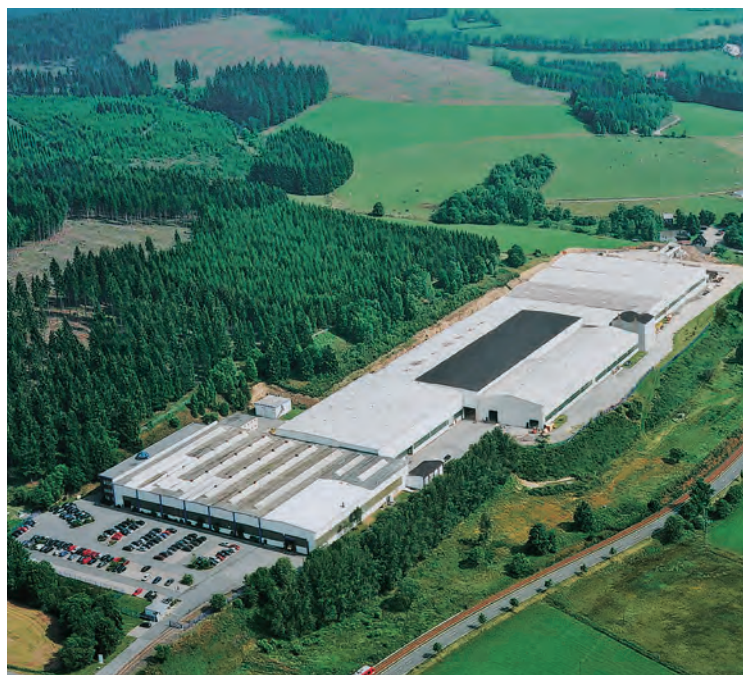
THE 13 METRE PRODUCTION LINE

The CNC controlled JCO forming press, optimised for high forming accuracy and efficiency is the heart of the production line.

IF SAW PIPE IS THE GAME, EEW WILL BE THE NAME!

The speciality of EEW in Germany is the wide range of qualities. Carbon steel, low alloy steel, stainless and duplex/superduplex steel as well as high alloyed steels are in our production programme.

EEW's ability: a very qualified team of engineers, a research and development department, motivated workers, combined with a suitable professional machinery equipment.



EEW KOREA EFFICIENT IN SAW PIPE MANUFACTURING

EEW Korea Co. Ltd. was founded in 2001 and is manufacturing SAW steel pipes since then. EEW Korea is equipped with the most modern machines and facilities with an annual production capacity of 120.000 tons.

The wide range of SAW pipes produced in Korea are used worldwide for a variety of applications: the offshore industry, oil and gas treatment plants and civil constructions.

Future demands from the oil and gas industries will require special grades of SAW steel pipes to withstand more severe service conditions. EEW Korea is fully prepared to be your reliable partner for these challenges. Let us continue to meet your requirements!



ENJOY THE PROFESSIONAL SERVICE OF EEW KOREA

- The most efficient 13 m manufacturing lines for SAW pipes.
- Advanced production and welding technology on 23.130 m² floor space (total plot 52.500 m²).
- Line pipe steels up to API 5L Grade X80;
Process pipe steels, incl. low alloy with sour service behaviours, if required;
Structural pipe steels, incl. arctic steels for Offshore;
Stainless steels, for example: TP 304, TP 316, Duplex Steel.
- All kind of heat treatments at all dimensions in our furnaces or in our inductive heat treatment facility.
- Surface pickling and passivating in a separated stainless steel finishing line.
- Pre-fabrication of pipe components.





ONLINE PRODUCTION

From plate receipt up to heat treatments and pre-fabrication of components an online production is guaranteed. This makes our manufacturing and quality control processes traceable and our pipe price competitive.

EEW MALAYSIA SDN BHD

The new designed pipe mill with high production flexibility has strengthened the EEW position in the SAW pipe market.

The production capacity is 30.000 tons for diameters ≥ 864 mm and 120.000 tons for diameters ≤ 1.219 mm.



FEATURES OF EEW MALAYSIA

On an 84.000 m² plot with 18.000 m² under roof a modern SAW pipe mill has been build in 2009. The pipe mill has 2 production lines. The 4M line is based on 4-roll bending and the 12M line is equipped with a CNC bending press.

All existing production know-how of the EEW group is used. Only proven machines, facilities and procedures are installed to ensure the same quality as for all pipes of the EEW group.





EEW MALAYSIA THE SAW PIPE MILL IN AN EXCELLENT LOCATION

An excellent location is the key to the SAW pipe markets. Therefore the new EEW pipe mill is established at the South Coast of Malaysia in the Tanjung Langsat Industrial Complex near Pasir Gudang. The mill is connected to the local harbour.

PIPES \geq 34" OD

The EEW MALAYSIA production programme is set to cover more than 90% of the typical SAW pipe demand in Malaysia, South East Asia and Australia. The 4M line covers the large dimensions.

Outside Diameter: 864 – 5.000 mm (34" – 200")

Wall Thickness: up to 135 mm (5,25")

Length: up to 4.200 mm

PIPES \leq 48" OD

The 12M line rounds up the production programme up to 1.219 mm diameter in long length.

Outside Diameter: 406 – 1.219 mm (16" – 48")

Wall Thickness: up to 40 mm (1,625")

Length: up to 12.500 mm

PRE-FABRICATION

Pre-fabrication of pipe components:

- circumferential welds
- internal/external attachments
- inside/outside weld beads

Component length: up to 36.000 mm

Piece weight: up to 100 tons



EEW - SPC SPECIAL PIPE CONSTRUCTIONS

EEW - SPC PROFESSIONAL CAPACITY FOR OFFSHORE PROFESSIONALS

Leading companies in the OFFSHORE OIL-, GAS- AND WINDPOWER business all over the world work with us to improve their capacities with our reliability.

Our success is to find constantly new solutions to transform them into reality.
The satisfaction of our clients and the acceptance of our services prove our leading market position.



Our new strength is the production of large and heavy pipes and components in our mill located at the Rostock harbour with direct access to vessels or barges.



EEW - SPC THE HEAVY WEIGHT IN THE EEW GROUP

The lay-out of EEW - SPC is based on the production of large diameter and heavy weight SAW pipes and components.

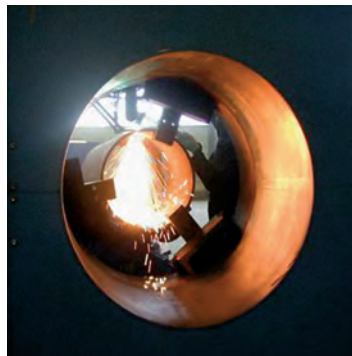
Outside Diameter:	1.524 mm (60") – 7.000 mm (275")
Wall Thickness:	up to 127 mm (5")
Single Length:	up to 4.800 mm
Length of Components:	up to 120 m (395')
Max. Weight:	up to 1.000 tons





SPECIAL CONSTRUCTIONS

Beside the manufacturing of SAW pipes all our mills offer various services for all kind of users “ready to build in or ready for installation” components.



POINT TO POINT CONSTRUCTION

Our clients are correct in expecting always the best service.

Depending on the project, we produce structural pipe components according to our POINT TO POINT CONSTRUCTION SERVICE.

This service contains detail engineering from the AFC drawing up to the delivery of ready to assembly pipe components.

References of more than hundred projects back up our performance.



Anchor piles



Pile follower



Reducers in all sizes from 200 up to 7000 mm OD, from 12 to 60 mm wall thickness



Monopile Transition piece



Piles

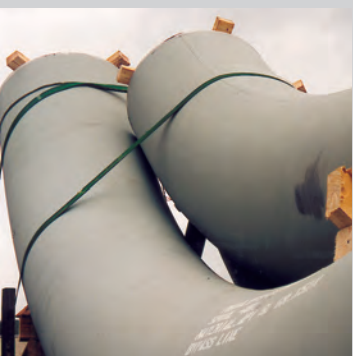
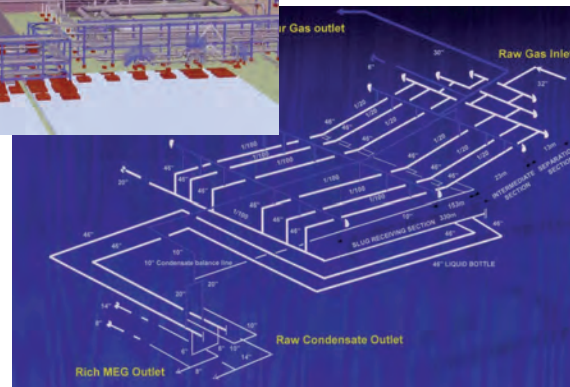
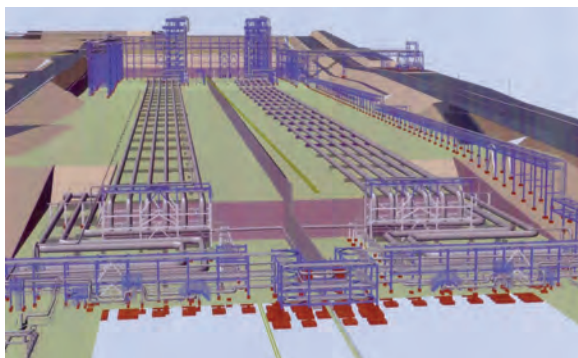
INDIVIDUAL OR COMPLETE SOLUTIONS

THESE ARE THE SOLUTIONS FOR SPECIAL REQUIREMENTS

An example is a SLUG CATCHER for gas and condensate separation.
You can count on our experience and proficiency in establishing the following scope of activities:

- Engineering
 - Dynamic simulations
 - Mechanical design
 - Stress analysis
 - Support design
- Detail engineering
 - General arrangement drawings
 - Detail drawings
 - Workshop drawings
- Manufacturing of pipes
- Supply of fittings and flanges
- Pre-fabrication of manifolds, knuckle joints, double joints and spools
- Coating
- Packing and transport

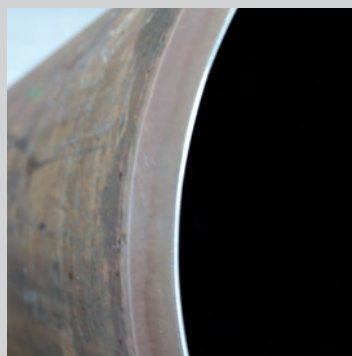
This is the flexibility, competence and the commitment which brings you forward.



Induction Bends



Spool Pre-Fabrication



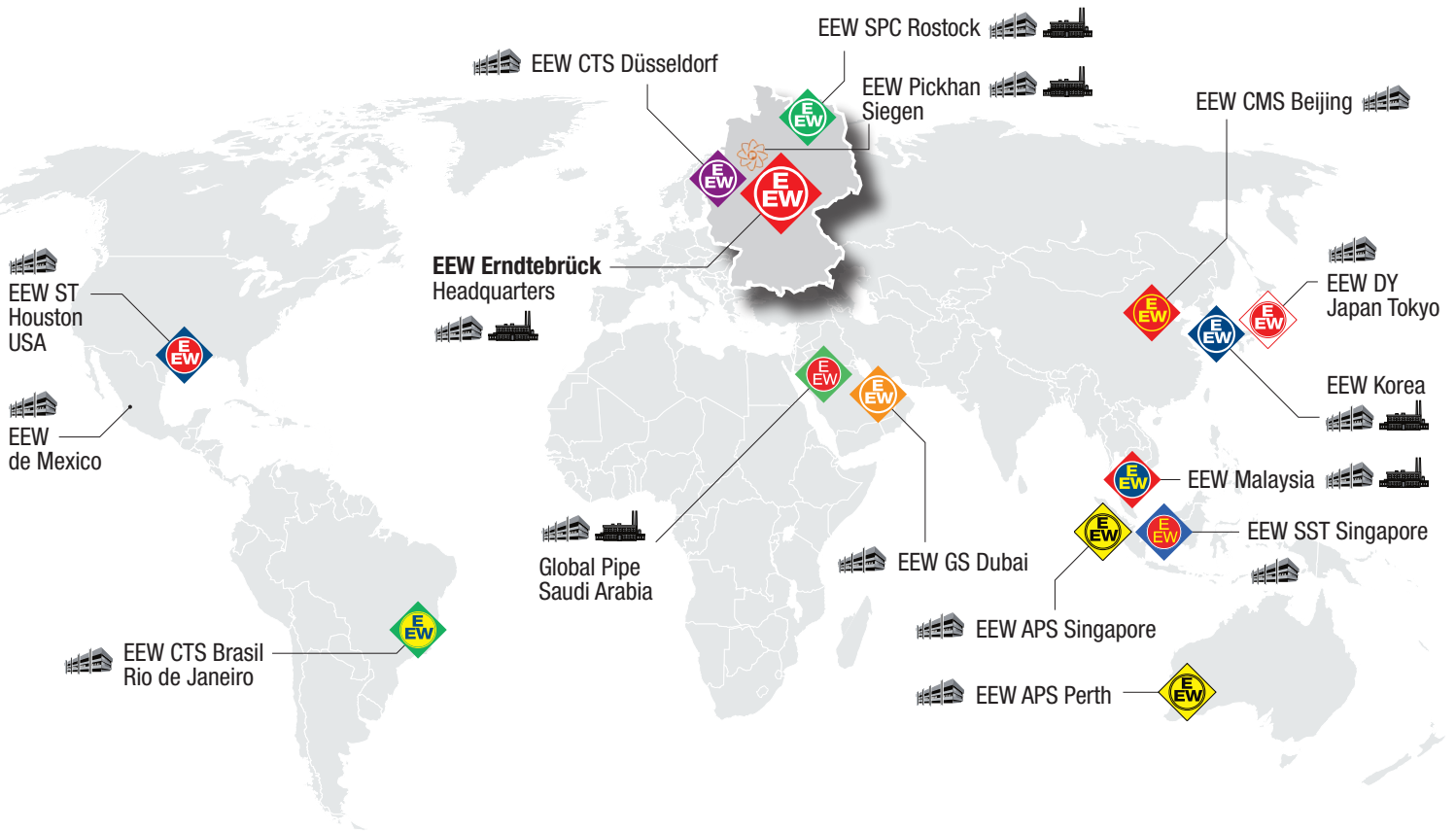
Clad Pipes




Stainless Steel Spools



EEW GROUP A GLOBAL ORGANISATION



 Trading / Administration

 Production



ERNDTEBRÜCKER EISENWERK GMBH & CO. KG

Im Grünewald 2
57339 Erndtebrück
Germany

P.O. Box 100
57335 Erndtebrück
Germany

Telephone
Telefax
E-Mail
Internet

(+49) 2753 609-0
(+49) 2753 609-190
info@eew.de
www.eew-group.com